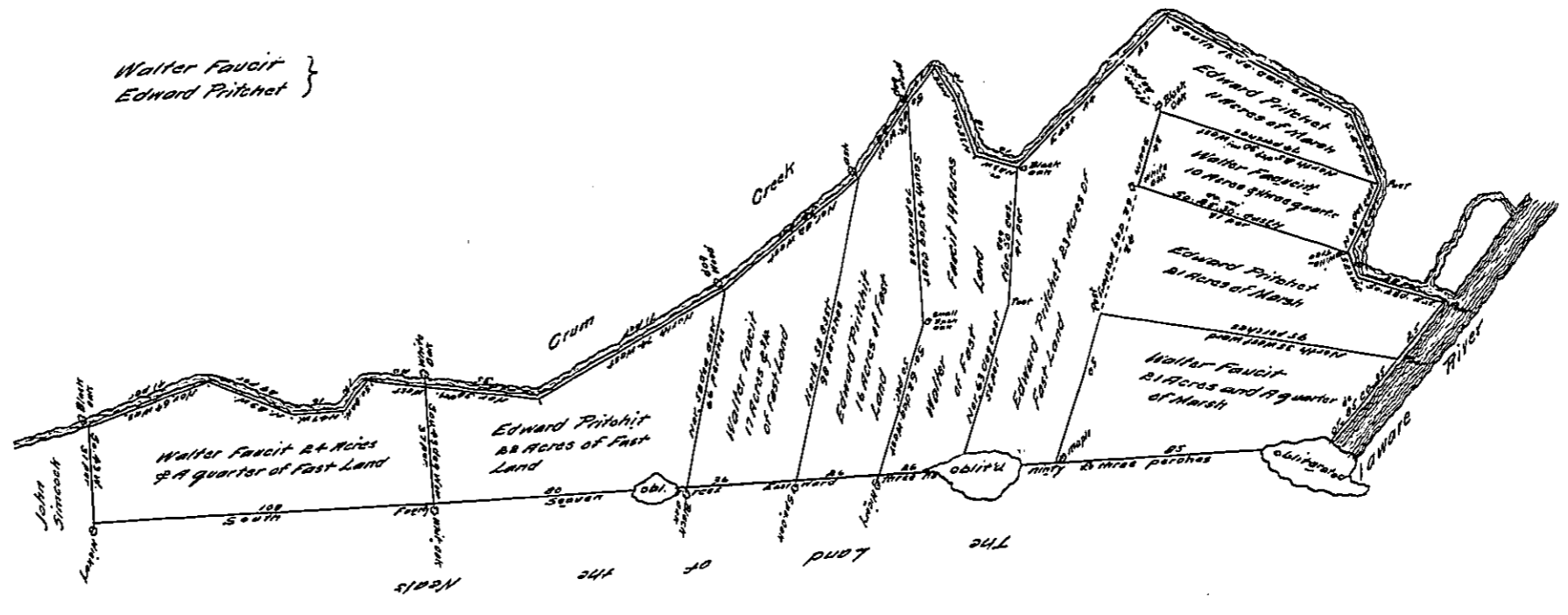


(Endorsement on back)

The  
 Draught of  
 Edward Pritchett  
 and  
 Walter Faucitt  
 their Land in Ridley  
 Township



These are to Certifie that By Virtue of a Warrant under the hand and seal of Edward Penington Sur<sup>r</sup> Gen<sup>l</sup> to me directed bearing date ye 26<sup>th</sup> day of ye Seventh Month 1761 Resurveyed to Walter Faucitt and Edward Pritchett a Tract of Land Situate in Ridley Township in ye County of Chester Beginning at a Black oak standing by Crum Creek thence South 43 degrees Westerly 31 perches to a Hickory thence South 47 degrees Easterly in the Line of ye Neal's 393 perches to a Post standing by Delaware River thence North 85 deg. Easterly 60 perches by ye s<sup>d</sup> River to a Post standing by a Gull or Part of Crum Creek then up ye s<sup>d</sup> Out or Run eight perches to Crum Creek then up ye s<sup>d</sup> Creek 565 perches to ye first mentioned black oak Containing 186 Acres. Which s<sup>d</sup> Tract I subdivided into ten parts or lots viz. Four of Marsh & six of Fast Land. Walter Faucitt his first Lot of Marsh beginneth at a Maple in ye line of the Neal's thence South 47 deg. Eastly 65 perches to a Post by Delaware River then up ye s<sup>d</sup> River North 85 deg. Eastly 35 perches to a post then North 35 deg. Westly in ye line of Edward Pritchett's Marsh 95 Perches to a post thence South 62 deg. Westly 50 Perches to ye first mentioned Maple (containing) 21 acres & a quarter. Walter Faucitt his second Lot of Marsh beginneth at a white oak by the side of Edward Pritchett's field (containing) 30 mi. Eastly in ye line of Edw. Pritchett 71 Perches to a White tree standing by Crum Creek thence North 69 deg. Eastly up ye said Creek 29 perches to a post thence North 25 deg. 30 min. Westly 74 Perches to a black oak thence South 62 deg. Westly Along ye side of ye fast Land 29 perches to ye first mentioned white oak Containing 10 Acres & three quarters. Edward Pritchett his first Lot of fast Land and two Lots of Marsh beginneth at a Maple being the corner of Walter Faucitt's Marsh thence North 47 deg. Westly in the Line of ye Neal's 32 perches to a Post thence North 63 deg. Eastly 56 perches in the Line of Walter Faucitt to a post thence down the Middle of the Lane North 50 deg. East 41 Perches to a black oak by Crum Creek thence down ye s<sup>d</sup> Creek east 67 Perches thence South 16 deg. Eastly 67 perches then South 24 deg. Westly 23 perches to a Post by ye s<sup>d</sup> Creek thence North 25 deg. 30 min. Westly 74 perches to a black oak standing on ye side of the fast Land then South 62 deg. Westly twenty four Perches to a White oak thence South 25 deg. 30 min. Eastly 71 perches to a White tree by Crum Creek thence South 23 degrees Westly 6 perches thence South 28 deg. Eastly 29 perches to a post by Delaware River or thence down the said River South 85 deg. Westly 25 perches to a Post thence North 35 deg. Westly 95 Perches in ye Line of Walter Faucitt's Marsh to a Post then South 62 deg. Westly 50 Perches to the first mentioned Maple Containing one Lot of fast Land being 23 Acres and two Lots of Marsh the one being 21 Acres the other Eleven Acres. Walter Faucitt his first Lot of fast Land beginneth at a Hickory in the Line of (Reiterated) Neal's then South 47 deg. Eastly 26 Perches to a Post in s<sup>d</sup> Line of ye Neal's thence North 63 deg. Eastly in ye Line of Edward Pritchett 500 Perches to a Post thence down the s<sup>d</sup> line North 30 deg. Eastly 41 perches to a black oak by Crum Creek then up ye s<sup>d</sup> Creek North 23 deg. Westly 16 perches then North 35 deg. Eastly 16 perches then South 60 deg. Westly 14 Perches to a Dog Wood Tree, ye s<sup>d</sup> Creek then South 43 deg. Westly in ye line of Edward Pritchett 70 perches to a small Black oak thence South 62 deg. Westly 50 perches to a Spanish oak in the line of ye Neal's thence North 58 deg. Eastly 98 perches to an ash by Crum Creek thence down ye s<sup>d</sup> Creek North 84 deg. Eastly 28 perches to a Dog Wood Tree thence in ye Line of Walter Faucitt South forty three deg. Westly 70 perches to a small black oak thence South 62 deg. Westly 50 perches to ye first mentioned Spanish oak Containing sixteen Acres - Walter Faucitt his second Lot of fast Land beginneth at a Spanish oak being ye Corner of Edward Pritchett's Lot thence North 47 degrees Westerly in ye Line of ye Neal's 36 perches to a black oak thence North 58 deg. Eastly 66 perches to a Dog Wood Tree by Crum Creek then down ye s<sup>d</sup> Creek South 62 deg. Eastly 34 perches to an ash then in ye line of Edward Pritchett South 50 deg. Westly 98 Perches to ye first mentioned Spanish oak Containing six-teen Acres & three quarters. Edward Pritchett his third Lot of fast Land beginneth at a black oak in the line of ye Neal's thence North 58 deg. Eastly in ye Line of Walter Faucitt sixty six Perches to a Dog Wood Tree by Crum Creek then up s<sup>d</sup> Creek North 79 deg. Westly 71 perches then North 38 deg. West 35 perches to a White oak by s<sup>d</sup> Creek then South 43 deg. Westly in the line of Walter Faucitt 37 perches to a White oak then South 47 deg. Eastly in ye Line of ye Neal's 80 perches to the first mentioned black oak Containing twenty two Acres. Walter Faucitt his third Lot of fast Land beginneth at a black oak by Crum Creek then South 43 deg. Westly in the line of Edward Pritchett 37 perches to a White oak by Crum Creek then up ye s<sup>d</sup> Creek north 38 deg. Westly 20 perches then South 64 deg. Westly 12 perches then North 47 deg. Westly 16 perches then North 23 deg. Westly 29 perches then North 64 deg. Westly 41 perches to the first mentioned Black oak Containing 24 Acres & a quarter

Resurveyed Measured and Subdivided the 13<sup>th</sup> 14<sup>th</sup> & 15<sup>th</sup> days of ye 8<sup>th</sup> month 1761  
 By me Isaac Taylor Dep<sup>y</sup> Surveyor

20  
 16  
 20  
 47

In Testimony, That the above is a copy of the original remaining on file in the Department of Internal Affairs of Pennsylvania, made conformably to an Act of Assembly approved the 16th day of February, 1813, I have hereunto set my hand and caused the Seal of the said Department to be affixed, at Harrisburg, the 26th day of June A.D. 1911.

Henry Howell,  
 Secretary of Internal Affairs.